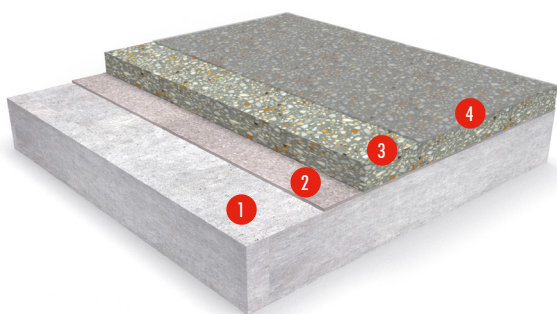


## Mondeco Granito

(7 mm nominal)

A decorative and hygienic epoxy terrazzo floor finish containing granite and quartz aggregates.



- 1 Prepared Substrate
- 2 Flowprime, scattered silica sand
- 3 Mondeco Granito
- 4 Flowseal PU Gloss (WB) & Enhance



### Attractive:

Extensive and flexible design to deliver the wow-factor underfoot.



### Seamless Finish:

Except for underlying slab joints and edging detail trim.



### Abrasion Resistant:

Holds its own against high levels of sustained pedestrian traffic.



### Easy to Clean:

Easy to clean and maintain, seamless surface with excellent life span.



### Temperature Resistant:

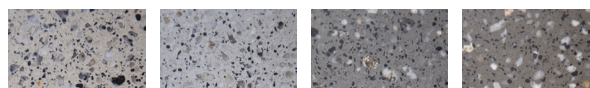
Tolerant of sustained temperatures up to 60°C.

FIRE RESISTANCE	
EN 13501-1	B <sub>f</sub> -s1
WEAR RESISTANCE	
EN 13892-4	AR0.5 ( $\leq 50 \mu\text{m}$ )
BOND STRENGTH	
EN 13892-8	B2.0 ( $\geq 2.0 \text{ MPa}$ )
IMPACT RESISTANCE	
EN ISO 6272	IR10 (10 Nm)
COMPRESSIVE STRENGTH	
EN 13892-2	$>55 \text{ N/mm}^2$
FLEXURAL STRENGTH	
EN 13892-2	$>20 \text{ N/mm}^2$
TENSILE STRENGTH	
BS 6319-7	$>10 \text{ N/mm}^2$
WATER PERMEABILITY	
Karsten test	Nil (Impermeable)
SLIP RESISTANCE*	
EN 13036-4 (typical values for 4-S rubber slider)	Dry $>40$ low slip potential

SPEED OF CURE	10 °C	20 °C	30 °C
Light Traffic	24 hrs	16 hrs	10 hrs
Full Traffic	72 hrs	48 hrs	36 hrs
Full Chemical Cure	12 days	7 days	7 days

The figures above are typical properties achieved in laboratory tests at 20°C and at 50% Relative Humidity.

\*The slipperiness of flooring materials can change significantly, due to the installation process, after short periods of use, due to inappropriate maintenance, longer-term wear and/ or surface contaminants (wet or dry). Textured systems are recommended to meet slip resistance value requirements for wet conditions and/ or surface contaminants (wet or dry) - please contact our Technical Advisors for further details and specifications.



RAL 1013 RAL 7035 RAL 7037 RAL 7039

The applied colours may differ from the examples shown.  
For a full colour chart and samples, contact your local CPG office.

## Model Specification

<b>System</b>	Mondeco Granito
<b>Finish</b>	Satin
<b>Thickness</b>	7 mm nominal

Preparatory work and application in accordance with manufacturer's instructions.

## Products Included In This System

<b>Primer</b>	Flowprime @ 0.25 - 0.5 kg/m <sup>2</sup>
<b>Scatter</b>	1-2 mm silica sand @ 0.5kg/m <sup>2</sup>
<b>Topping</b>	Mondeco Granito (average density 2.1 kg/l) @ 18.9 kg/m <sup>2</sup> (Applied at 9 mm, ground down to 7 mm).
<b>Grout</b>	Mondeco Grout @ up to 0.2 kg/m <sup>2</sup> Applied in 1 or 2 layers
<b>Sealers (1<sup>st</sup> Coat)</b>	Flowseal PU Satin @ 0.06 kg/m <sup>2</sup> Dilute the pre-mixed product 1:1 by weight with clean water to ensure the correct application viscosity.
<b>Sealers (2<sup>nd</sup> Coating)</b>	Flowseal PU Satin @ 0.08 kg/m <sup>2</sup> Dilute the pre-mixed product with 500 ml (500 g) clean water per 4.6 kg unit of Flowseal PU Satin to ensure the correct application viscosity and consistent finish.

Detailed application instructions are available upon request.

## Substrate Requirements

Concrete or screed substrate should be a minimum of 25 N/mm<sup>2</sup>, free from laitance, dust and other contamination. The substrate should be dry to 75% RH as per BS8203 (4.5% on Tramex scale) and free from rising damp and ground water pressure. If no damp proof membrane is present Flowcrete Hydraseal DPM can be incorporated directly beneath the Mondeco system.

## Installation Service

The installation must be carried out by a Tremco CPG approved contractor with a documented quality assurance scheme. Obtain details of our approved contractors by contacting our customer service team or enquiring via our website [www.flowcrete.eu](http://www.flowcrete.eu).

## Notes

Mondeco Granito is not totally colour fast and may change colour over time (exhibits a yellowing effect). Colour change depends on the UV light and heat levels present and hence the rate of change cannot be predicted. This is more noticeable in very light colours but does not compromise the product's flexibility or chemical resistance characteristics. We have endeavoured to adopt colours within our standard range which minimise this change. Separate each adjacent application bay (a day's lay) by a trim and ensure that single batch components are used within each bay. Intensively coloured products (e.g. hair colourants, medical disinfectants etc.) and plasticizer migration (e.g. from rubber tyres) can lead to irreversible discolouration in the surface. Please contact our Technical Services Department for further advice.

## Environmental Considerations

Recycled materials are used wherever possible. The finished system is assessed as non-hazardous to health and the environment. The long service life and seamless surface reduce the need for repairs, maintenance and cleaning. Environmental and health considerations are controlled during manufacture and application of the products by Tremco CPG staff and fully trained and experienced contractors.

## Important Notes

Tremco CPG products are guaranteed against defective materials and manufacture and are sold subject to our standard 'Warranty, Terms and Conditions of Sale', copies of which can be obtained on request. Warranty does not cover suitability, fit for purpose or any consequential or related damages. Please review warranty in detail before installing the products.

Tremco CPG UK Ltd products are guaranteed against defective materials and manufacture and are sold subject to its standard Terms and Conditions of Sale, copies of which can be obtained on request. Any suggested practices or installation specifications for the composite floor or wall system (as opposed to individual product performance specifications) included in this communication (or any other) from Tremco CPG UK Ltd constitute potential options only and do not constitute nor replace professional advice in such regard. Tremco CPG UK Ltd recommends any customer seek independent advice from a qualified consultant prior to reaching any decision on design, installation or otherwise.

System Datasheet written for Tremco CPG UK Ltd. Please consult Technical Team in your own country region for specific details. [11/12/23, 01 UK]